

Master Flash® Standard



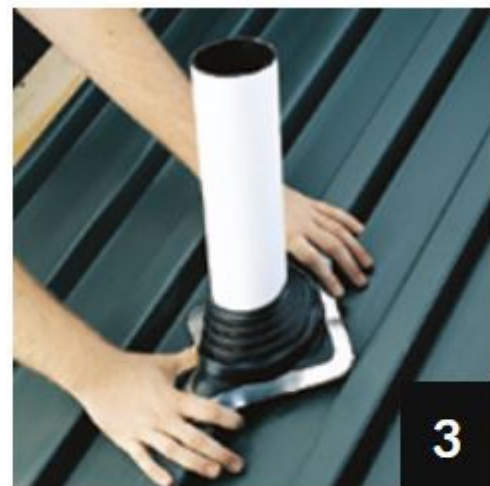
1

Select an appropriate Master Flash® Standard with a pipe range that goes below and beyond fitting. If necessary, use the lines clearly shown on the flashing to trim an opening 20% - 30% smaller than pipe diameter.



2

Slide the Master Flash® down the pipe, using a non-petroleum-based lubricant to ease installation.



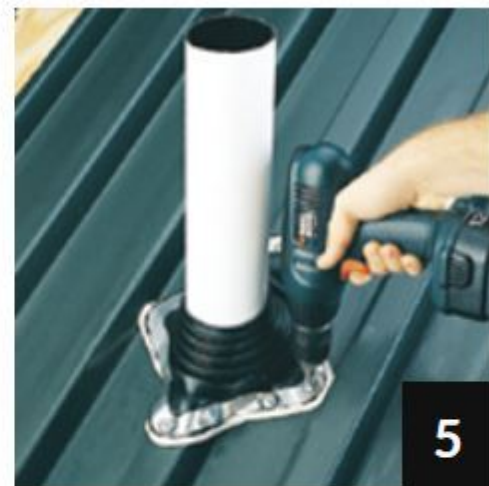
3

Press Master Flash® down, bending it to conform to roof profile or roof irregularities. A blunt tool will help to form flashing to tight roof angles.



4

Apply sealant between the base of the flashing and the roof.



5

Use fasteners to complete sealing. For a secure installation, fastener spacing must not exceed 1.5" (38 mm).